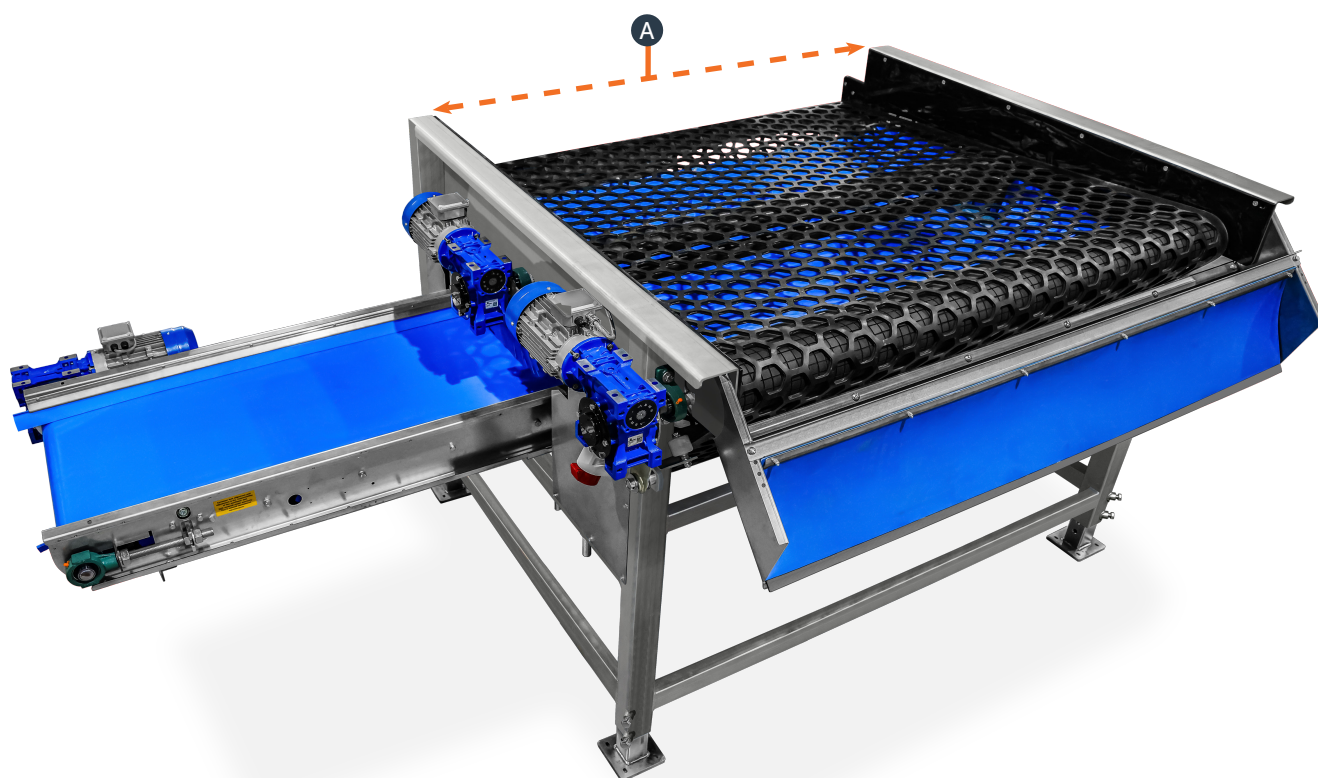


## SCREEN SIZER SS

The screen sizer is designed for grading. Produce is transported over a web conveyor towards the outfeed. Produce falls through the gaps onto another conveyor.



### General description

The screen sizer is designed to grade according to the hexagonal, square, or round size. It has a rotating rubber bed with fixed-size gaps. Produce is fed onto the rubber bed, and small produce falls through the gaps onto a conveyor, while larger produce is transported over a web conveyor towards the outfeed. This process is aided by mechanical vibration that gently agitates the produce on the rubber bed.

Several screen sizers can be placed in a row, each with slightly larger gaps than the one before it, to separate produce into additional sizes.

All dimensions in cm

	SS 90	SS 120	SS 180
A Width of the screen	90	120	180

All capacities are indications based on experience from the past and depend on the agro climatic, soil and logistic conditions of the product, Allround VP does not guarantee any of these.

## Characteristics

- ✓ Designed to grade according to the hexagonal, square, or round size
- ✓ The gaps of the sieve are 20 to 100, steps of 1 mm
- ✓ The frame can be made from painted mild steel or galvanized steel. But the bearings and drive/idle rollers are always made from mild steel
- ✓ A frequency inverter is included to control the speed
- ✓ A camshaft is included to create the hopping effect so that the grading result can be better

## Options:

### ■ Material and treatment (frame)

Painted mild steel	Frame is made from painted mild steel. The bearings and drive/idle rollers are from mild steel
Stainless steel	Frame is made from stainless steel AISI304. The bearings and drive/idle rollers are from mild steel

### ■ Material and treatment (sieves)

Mild steel	Sieve is made from mild steel
Rubber	Sieve is made from rubber

### ■ Sieve

Sieve	The gaps of the sieve are 20 to 100, steps of 1 mm and the gaps are round, hexagon or square shaped
-------	---

### ■ Electrical control

No electric	Motors and necessary sensors
Stand-alone	Motors, necessary sensors and control panel. The length of the cable is 5, 10, 15 or 20 meter
Central control in line	Motors and necessary sensors

### ■ Frequency inverter

Frequency inverter	A frequency inverter is included to control the speed
--------------------	---

### ■ Material and treatment (electrical panel)

Painted mild steel	The electrical panel is made from painted mild steel
Galvanized steel	The electrical panel is made from stainless steel AISI304

### ■ Material and treatment (subframe)

Painted mild steel	It is made of Painted mild steel
Stainless steel	It is made of stainless steel AISI304
Galvanized steel	It is made of galvanized mild steel

**Options:**■ **Height of subframe**

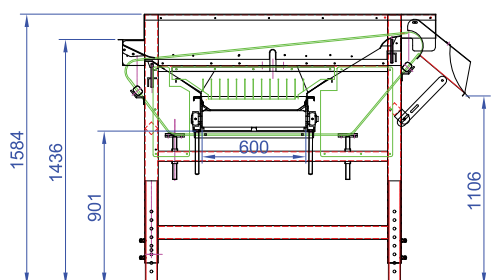
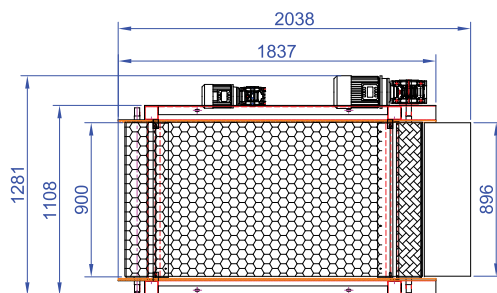
Height of subframe                      0 – 3 meters



■ **Camshaft**

Camshaft                                      A camshaft is included to create the hopping effect so the grading result can be better

## SS 90

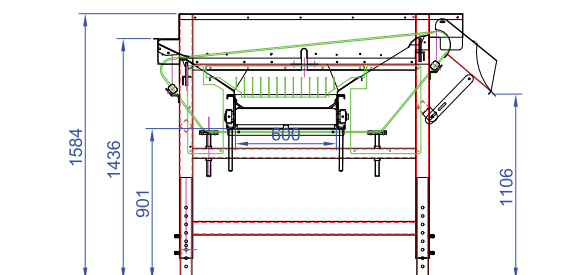
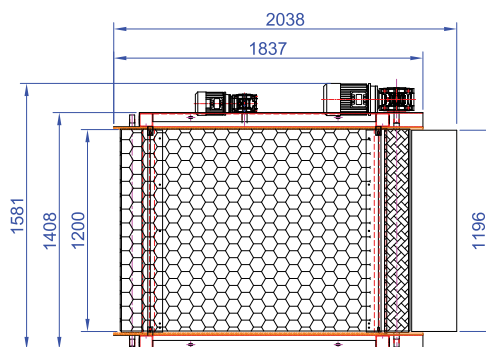
THIS SKETCH IS ONLY FOR DISCUSSION!  
 FINAL LAYOUT FOR APPROVEMENT WILL BE  
 SEND AFTER ORDER





Pos	Qty	Description:	Material:	Dimension:	Note:
 Web grader SS 90					
		Engineer: DKB	Project: Standard	Product: PRODUCT	
		Checked by: SR	Drawing Nr: 01	Capacity: -	
		Scale: 1:20 A3	Date: 23-05-2022	Box Size: -	

## SS 120

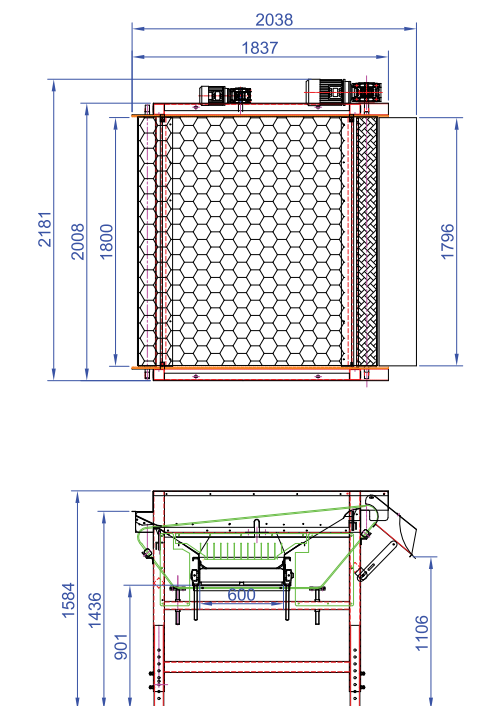
THIS SKETCH IS ONLY FOR DISCUSSION!  
 FINAL LAYOUT FOR APPROVEMENT WILL BE  
 SEND AFTER ORDER




Pos	Qty	Description:	Material:	Dimension:	Note:
 Web grader SS 120					
		Engineer: DKB	Project: Standard	Product: PRODUCT	
		Checked by: SR	Drawing Nr: 01	Capacity: -	
		Scale: 1:20 A3	Date: 23-05-2022	Box Size: -	

## SS 180

THIS SKETCH IS ONLY FOR DISCUSSION!  
FINAL LAYOUT FOR APPROVEMENT WILL BE  
SEND AFTER ORDER



Pos	Qty	Description:	Material:	Dimension:	Note:
 <b>ALLROUND</b> VEGETABLE PROCESSING					
		Web grader SS 180			
		Engineer: DKB	Project: Standard	Product: PRODUCT	
		Checked by: SR	Drawing Nr: 01	Capacity: -	
		Scale: 1:25 A3	Date: 23-05-2022	Box Size: -	